

❖ Friendship Garden Mystery Quilt 2018 - Block # 3 ❖

by Kathleen Tracy

1. Make 8 four-patch blocks from 2" x 2" squares:

Cut 16 squares (2" x 2") from a light or medium print fabric.

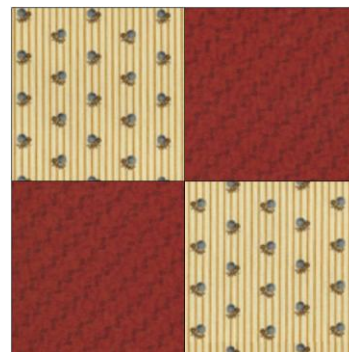
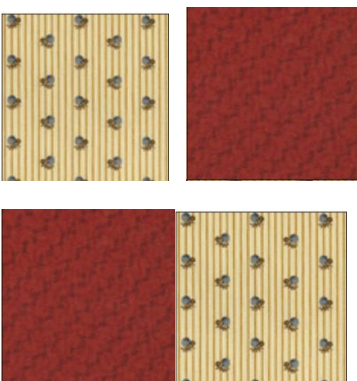
Cut 16 squares (2" x 2") from a contrasting medium or dark print.

These should all be the same 2 prints. OR, for a more scrappy look, you may vary the prints and make sure the colors are in the same color family.

Example: Cut several different reds (or blues, greens, browns, etc.) + different lights or mediums



Sew a light 2" square to a medium print 2" square. Make 16 units. Sew the units together as shown to make a four-patch block. Make 8 blocks. Your blocks should measure 3 1/2" x 3 1/2" (They will be 3" when FINISHED in the quilt).



Make 8 blocks.

2. **Cut 4 squares**, 3 1/2" x 3 1/2" from a fabric that contrasts with (but also coordinates with) your four-patch squares. For instance, if you are making your four patch blocks with a red print, then do not use another red or similar colored print for these squares. Try brown or blue or something that you like to use with red in your quilts.

Set these pieces aside. After I post the next step in April we'll be putting these together in the quilt.

* * *

If you have not already cut your 3 1/4" squares (20 of them) for one of the next steps, you may want to do that this month. See the previous instructions for Block 2 for details.