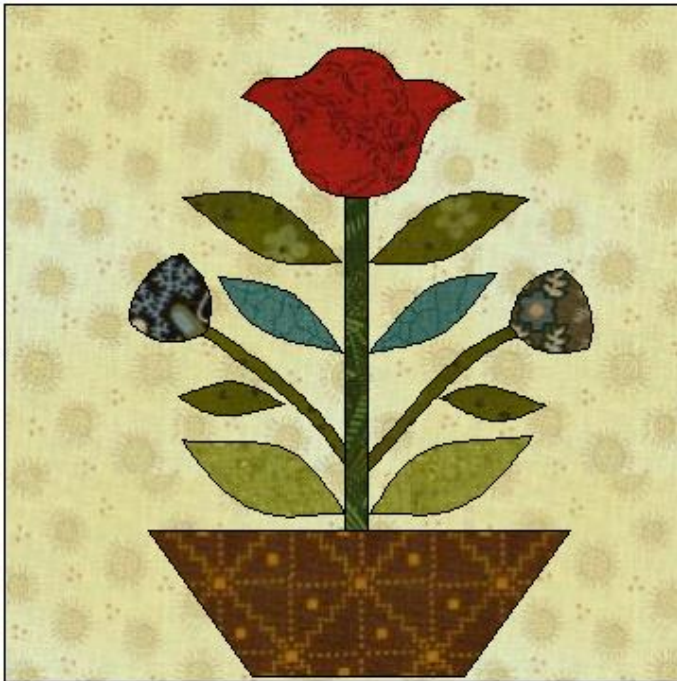


# Friendship Garden Mystery Quilt 2018 - Step # 1

Finished block size: 8" x 8"

Unfinished: 8 1/2" x 8 1/2"

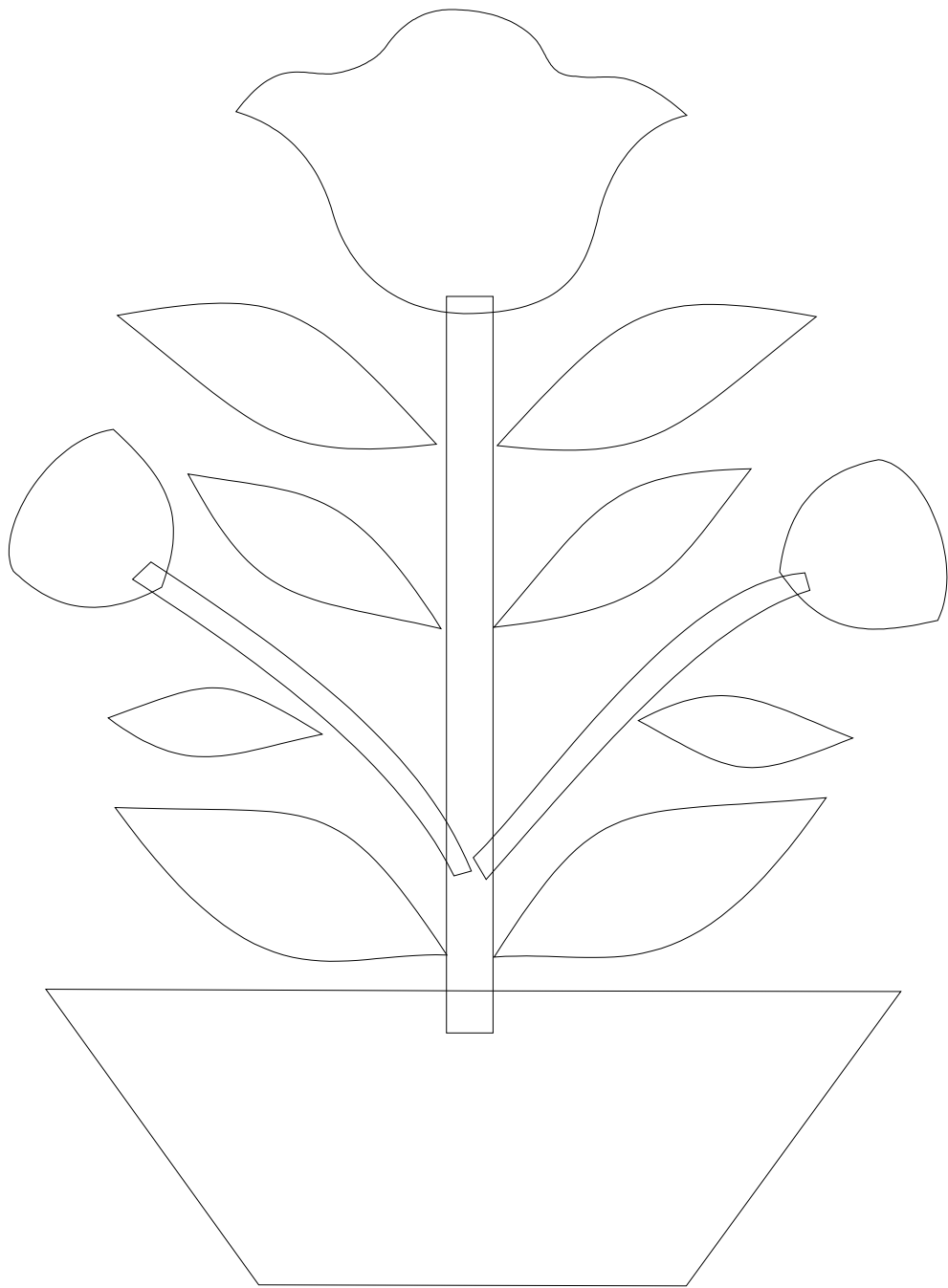


This is the first block for our Friendship Garden Mystery Quilt project for 2018. **Please read the Intro file** so you know how the Mystery will work. For those of you who are reluctant to try the applique, there's an alternate pieced block - an 8" star at the end of this document. Use that for the center if you prefer.

1. Cut a background square from an 9" x 9" piece of fabric. **This will be trimmed to 8 1/2" square when you finish your appliqué.** The appliqué can be done in cotton fabric or wool. You may choose your own method of appliqué – freezer paper, needleturn, fusible web, etc. There are many different ways of doing appliqué and I cannot give instructions for every single method of doing it. If you are new to appliqué and do not have a favorite technique, there are plenty of tutorials and videos on doing appliqué online or in quilting books. Try one and see if it works for you.

If you have one of my later books, take a look at the **Quiltmaking Basics** section at the end. You'll see some tips with diagrams as to how I like to do my own appliqué using the template and starch method (using no-melt plastic Templar or Mylar). It's easy and accurate and some of you who have taken a workshop with me have enjoyed learning to do appliqué this way. There are many video tutorials on YouTube that show how to do appliqué this way. Depending upon the method you choose, remember that you may have to add 1/4" seam allowance to your shapes.

Use the diagram on the next page for placement of the shapes. The lines that extend into other pieces are shapes that should be layered. In other words, the main stem should be placed under the basket and top flower. The side stems are placed beneath the main stem and stitched under the side flower buds. I used no-melt pressing bars for my stems but you can also use a bias tape maker to make them. When you have finished the appliqué, **trim and make sure your block measures 8 1/2" x 8 1/2"** before the next round is added. It will measure 8" x 8" (finished) when the next part is sewn to the block.



(When you print out this pattern, make sure the design fits inside an 8" x 8" square before tracing your templates. If it does not, the pieces will be too large so adjust your printer settings.)

## Alternate Block #1 for Mystery Quilt



Finished block: 8" x 8"

Cut one square 4 1/2" x 4 1/2" for the center of the block

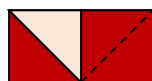
Cut 8 squares, 2 1/2" x 2 1/2" for the star points

Cut 4 rectangles, 2 1/2" x 4 1/2" from a light print for the star background

Cut 4 squares, 2 1/2" x 2 1/2" from a matching (or different) light print for the corner background squares

### Directions:

1. Draw a diagonal line on the wrong side of each 2 1/2" square for the star points.
2. Layer a marked square on one end of a 2 1/2" x 4 1/2" light print rectangle. Stitch on the diagonal line as shown. Flip and press open to the corner. Trim the seam allowance to 1/4". Place another marked square on the other end of the rectangle and repeat. Make 4 flying geese units.



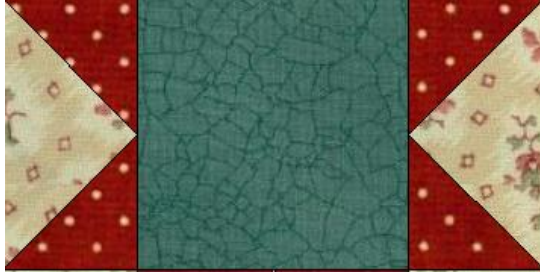
Make 4.

3. Sew two 2 1/2" light print squares to each end of a flying geese unit. Press. Make 2.



Make 2.

4. Sew the remaining two flying geese units to the sides of the 4 1/2" center square as shown.



5. Sew the units from step 3 to the top and bottom of the block.



The block should measure **8 1/2" x 8 1/2"** (unfinished) before adding the next round. It will **finish** at 8" x 8" when your quilt is complete.