

2020 Mystery Quilt – Step #2

By Kathleen Tracy

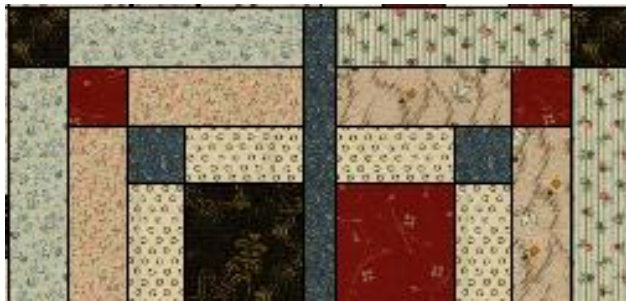
(Please read through all of the directions before you begin. Make sure to cut your pieces accurately and take your time when sewing together with a scant $\frac{1}{4}$ " seam.)

From fabrics of your choice, cut

4 strips, 1" x 5 $\frac{1}{4}$ "

1 square, 1" x 1"

1. Sew 2 blocks from the January Step #1 together with one 1" x 5 $\frac{1}{4}$ " strip in the center. Make 2 units.

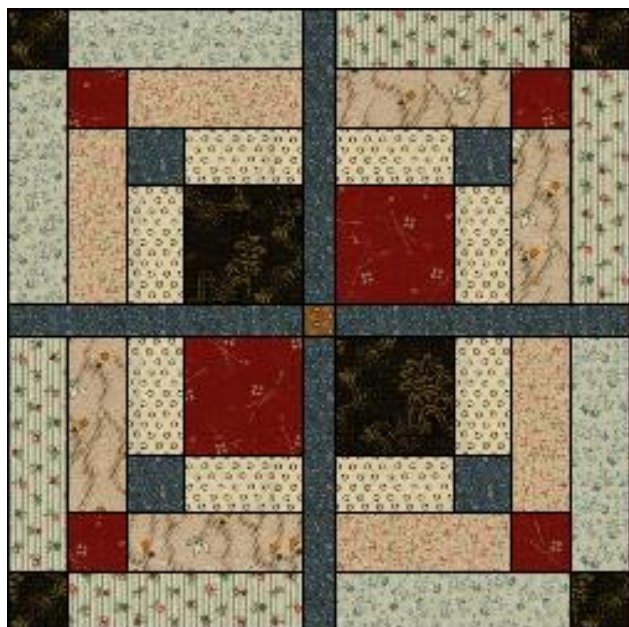


Make 2.

2. Sew 2 strips to the sides of the 1" square.



3. Sew the units together to make the center of the quilt.



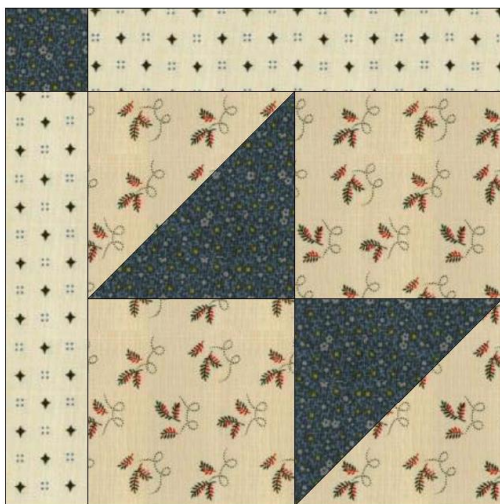
Next, you will be making **7 additional blocks**:

Materials:

Scraps of light prints or shirting prints

Scraps of medium or dark prints

Block 1



Make 4.

Cutting:

From a light print, cut

1 square, 2 7/8" x 2 7/8"

2 squares, 2 1/2" x 2 1/2"

2 rectangles, 1 1/2" x 4 1/2" (You may use the same light print or a different light print for a scrappy look.)

From a medium or dark print, cut

1 square, 2 7/8" x 2 7/8"

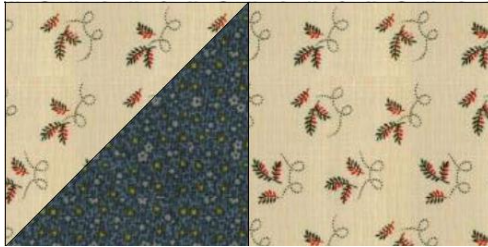
1 square, 1 1/2" x 1 1/2"

1. Make 2 half-square triangles from the 2 7/8" light and medium or dark print squares. See directions for making the half-square triangles in Step 1 of the Mystery quilt for January. Remember to cut your squares 2 7/8" for this step.

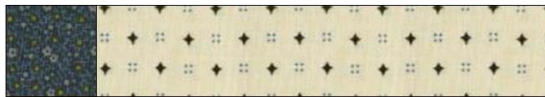


Make 2.

2. Sew the half-square triangles together with the $2\frac{1}{2}$ " light squares. Trim block to measure $4\frac{1}{2}$ " x $4\frac{1}{2}$ "

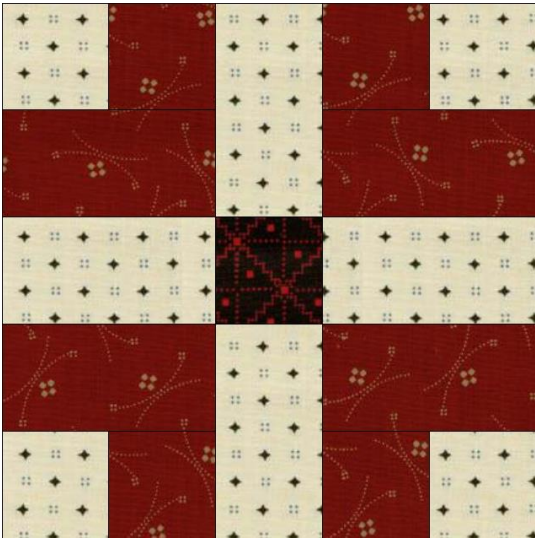


3. Sew a $1\frac{1}{2}$ " x $4\frac{1}{2}$ " light rectangle to the side of the unit. Sew a 1" square to the end of the other $1\frac{1}{2}$ " x $4\frac{1}{2}$ " rectangle. Sew the pieces together as shown. Block should measure $5\frac{1}{2}$ " x $5\frac{1}{2}$ ". You can make all of the blocks the same or mix it up for a scrappy look. Instead of using a light print for the rectangles or the block background, you may use a medium print if you prefer.



Make 4 blocks

Block 2



Make 1.

Cutting:

From a light print, cut

4 squares, 1 ½" x 1 ½"

4 rectangles, 1 ½" x 2 ½"

From medium or dark prints, cut

4 squares, 1 ½" x 1 ½"

4 rectangles, 1 ½" x 2 ½"

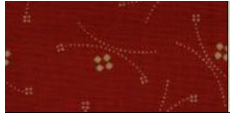
1 square 1 ½" x 1 ½"

1. Sew a light print 1 ½" square to a medium or dark print 1 ½" square.

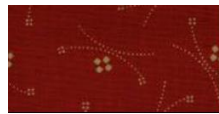


Make 4.

2. Sew a 1 1/2" x 2 1/2" medium or dark rectangle together with the unit above. Make 4 units as shown.

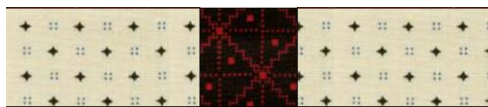


Make 2.

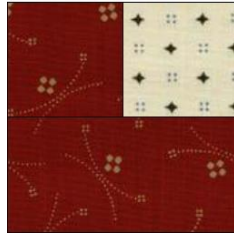
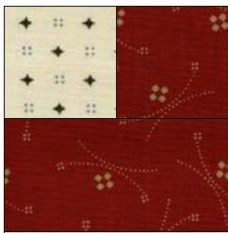


Make 2.

3. Sew the two light print rectangles to both sides of a 1 1/2" dark square.

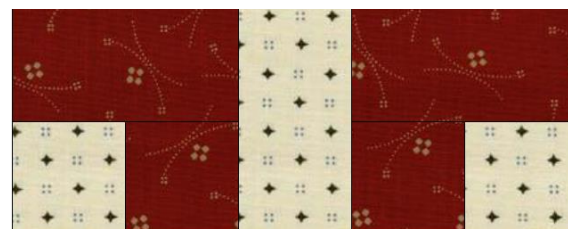
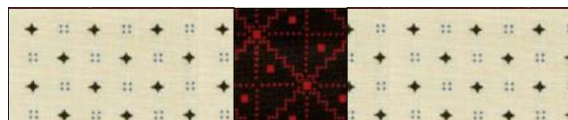


4. Sew 2 units from step 2 together with a light rectangle. Make 2.



Make 2.

5. Sew the units together as shown.



Make 1.

Block 3



Make 2.

Cutting

From a light print, cut

2 squares, $2 \frac{7}{8}$ " x $2 \frac{7}{8}$ "

2 rectangles, $1 \frac{1}{2}$ " x $2 \frac{1}{2}$ "

From medium or dark prints, cut

2 squares, $2 \frac{7}{8}$ " x $2 \frac{7}{8}$ "

1 square, $1 \frac{1}{2}$ " x $1 \frac{1}{2}$ "

1. Make 4 half-square triangles from the $2 \frac{7}{8}$ " light and medium or dark print squares. See directions for making half-square triangles in Step #1 of the Mystery quilt for January. Remember to cut your squares $2 \frac{7}{8}$ ".



Make 4.

2. Sew 2 of the half-square triangle units together with a $1 \frac{1}{2}$ " x $2 \frac{1}{2}$ " rectangle as shown. Make 2 units.



Make 2.

3. Sew a 1 ½" square together with 2 light print rectangles.



4. Make the block as shown. Make 2 blocks, both the same or from different prints.



Make 2.

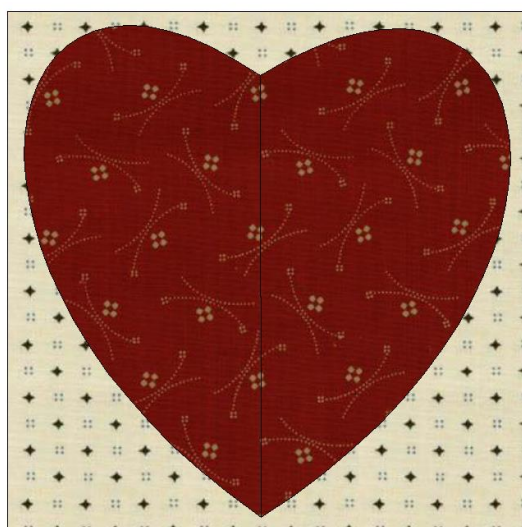
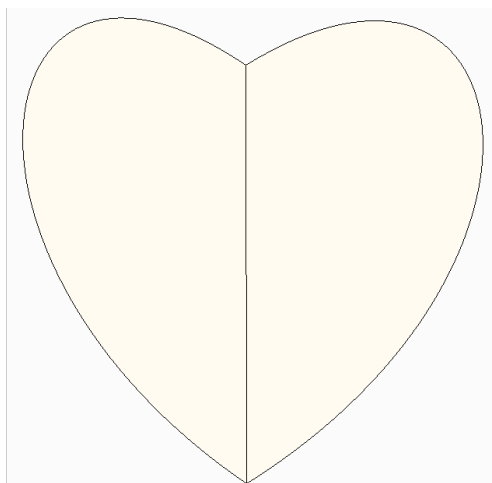
All seven blocks should measure 5 ½" x 5 ½" (5" when finished in the quilt).

Block 4

Yay, now it's time for a little appliqué!

1. Cut two squares, 4" x 4", from a light or medium print.
2. Using medium or dark print scraps of fabric in your choice of colors, make 2 heart shapes from the pattern below. (Ignore the line in the center. I used it to make sure both sides of the heart were equal).
3. Appliqué the heart shapes onto the 4" squares using your favorite appliqué technique. Make sure the heart is centered. I like to fold the square in half and then place the heart point along the crease. Pin or dab a bit of fabric glue to keep it in place.
4. Trim the appliqued block to 3 ½" x 3 ½", making sure there is a ¼" inch all around for sewing the seam.

There are many different appliqué methods to use - needle turn, fusible web, wool and my favorite: starch and template. If you're new to appliqué, try learning about and experimenting with some of the different methods. Look at videos online or get some books to help you. Practice.



Make 2.