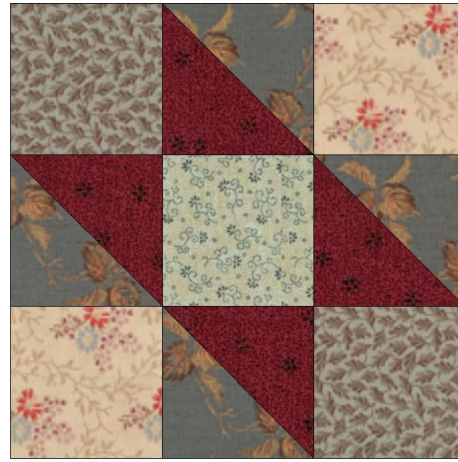
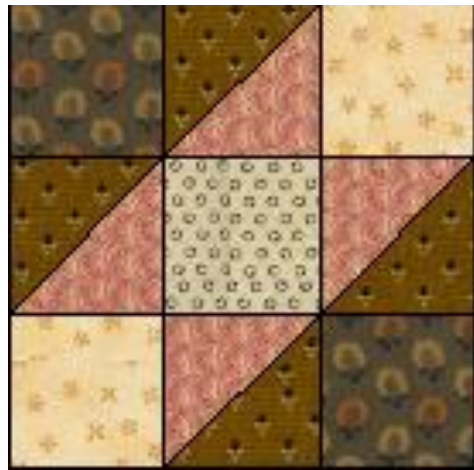


Small Quilt Challenge, Summer 2024

Block: Contrary Wife Block (Finished block: 4 1/2" x 4 1/2")

Join the group in a challenge to make a small quilt using the Contrary Wife block. Make each of your blocks with the same fabrics or try a scrappy look, making each block with different fabrics. Use as many blocks as you like to complete your quilt, adding sashing, borders or plain blocks. Set your blocks on point or straight, keeping to a small quilt size, under 30" x 30." See some examples below.



Make the block:

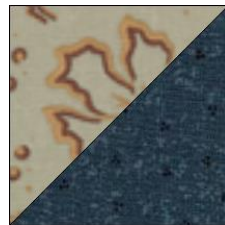
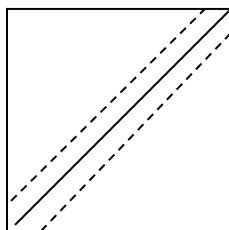
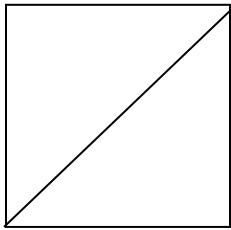
This is a simple block made up of five squares and four half-square triangles.

Cut 5 squares, 2" x 2". Study the placement of the light and dark fabrics in the blocks above and then play around with some of your favorite fabrics. Use light, medium or dark prints as you please to make the blocks.

For the four half-square triangles -

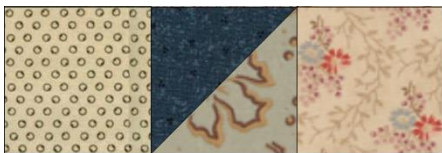
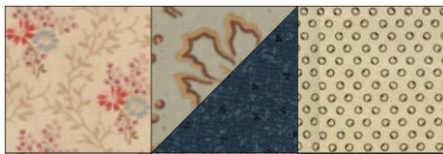
Cut 2 squares, 2 3/8" x 2 3/8", from a light or medium print and 2 squares from a medium or dark print for best contrast.

1. Make 4 half-square triangle units from the 2 light print $2\frac{3}{8}$ " x $2\frac{3}{8}$ " squares and the 2 medium or dark print $2\frac{3}{8}$ " x $2\frac{3}{8}$ " squares.
2. Draw a diagonal line across the wrong side of the light square. Placing right sides together, layer light and dark squares. Sew $\frac{1}{4}$ " away from the line on both sides (dashed lines). Cut on the drawn line and press open. Trim to 2".



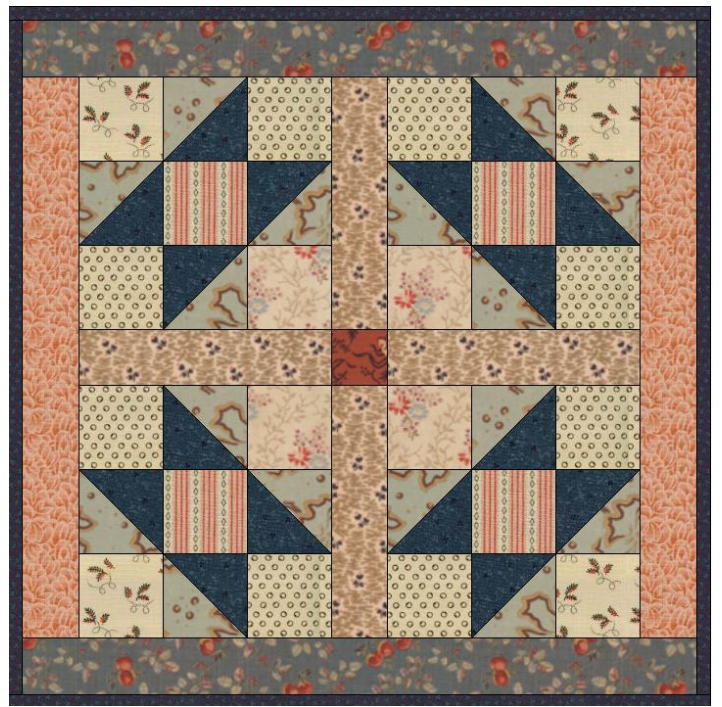
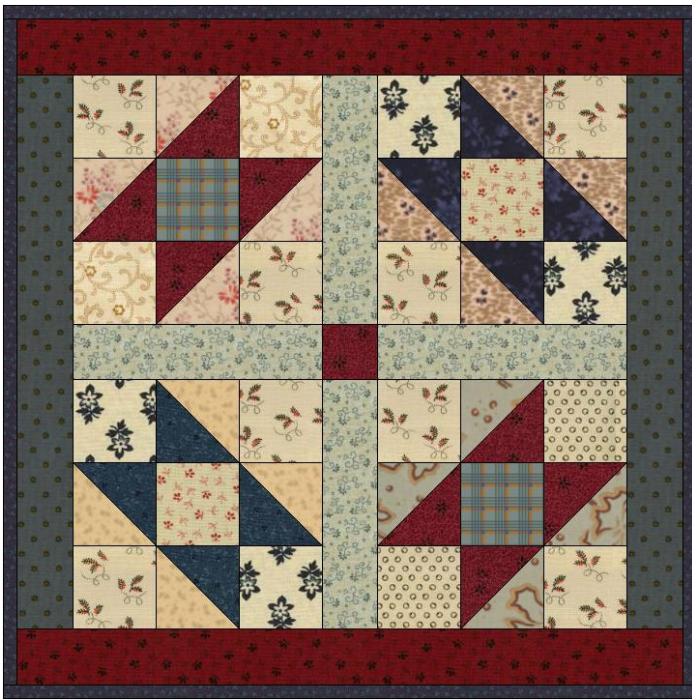
Here's a tip: Before cutting the triangles apart, press each side open first. This prevents the units from stretching too much and keeps them from getting distorted.

3. Sew the squares and half-square triangles together into 3 rows as shown. Sew the rows together. Press and trim to 5".



Trim to 5" x 5"

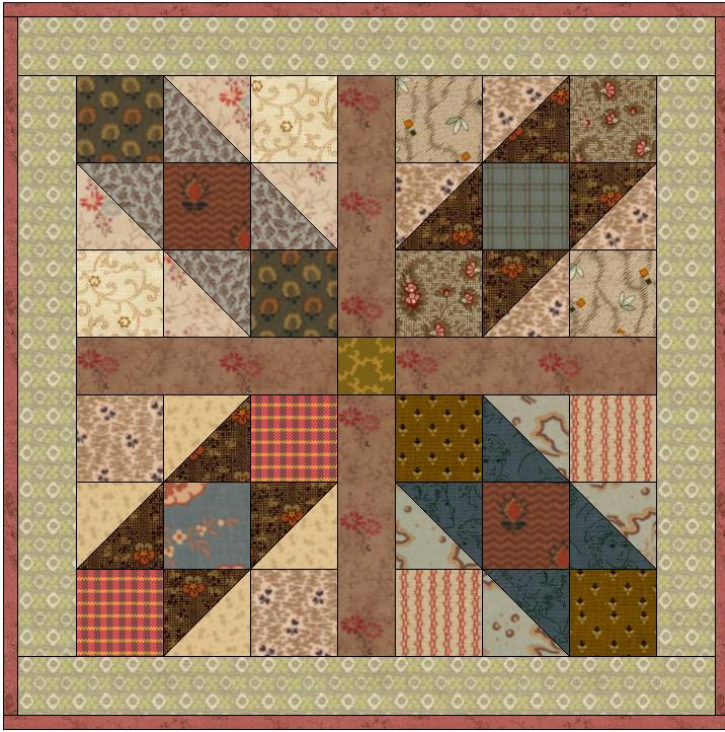
(Block will finish at 4 1/2" in quilt)



For sashing, cut 1 1/2" x 5" strips and sew together with the blocks and a 1 1/2" center square.



Isn't it funny how the same block can look so different depending upon the placement of lights and darks, whether you use sashing between the blocks and then when you arrange them in a quilt??



So many possibilities! Have fun with this one.



Copyright 2024, Kathleen Tracy. All rights reserved. Do not copy, reproduce or distribute.